



# Gingerbread-By-Design

## Elf House Gingerbread House Pattern

Approximate size: 7 1/2" wide x 4 1/2" deep x 9" tall

### Chimney

Place all **four chimney pieces (E, D, E, D)** on a flat surface with the four bottom corners touching. Apply bead of frosting to edges of each piece. While frosting is still wet, stand-up each piece, connecting pieces together at all edges. If needed, prop each piece with a small soup can. Let dry while assembling house pieces.

### Walls

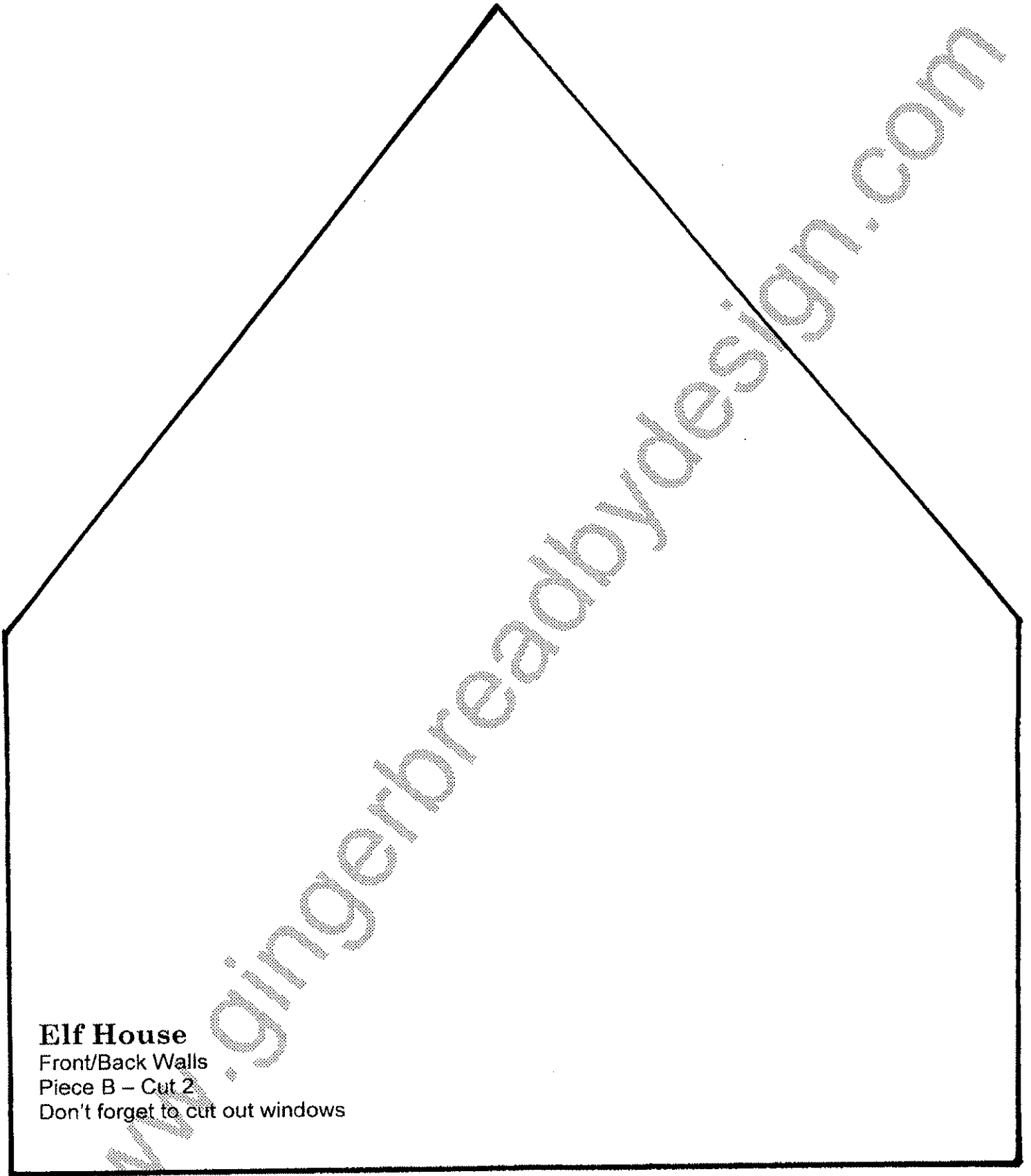
Place **four wall pieces (B, C, B, C)** flat on your base so four corners are touching. Apply a bead of frosting along the base of each piece. Apply a bead of frosting along the sides of each piece. Stand-up each wall, connecting pieces to each other at sides. Support with food cans if necessary. Let dry.



### Roof

Apply a bead of frosting along top edges of wall pieces. Attach **right roof piece A**, lining up top edge and peak of house. Hold until set. Support while drying. Attach **left roof piece A**, lining up top edge and peak of house. Apply frosting down middle of roof line, filling in any gaps in roof. Let dry. Attach dried chimney to roofline with frosting.

If you have any questions, e-mail [help@gingerbreadbydesign.com](mailto:help@gingerbreadbydesign.com) for assembly assistance.



**Elf House**

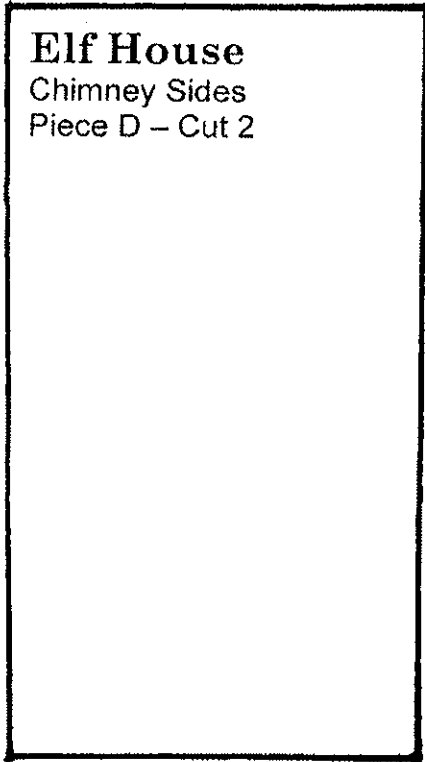
Front/Back Walls

Piece B – Cut 2

Don't forget to cut out windows

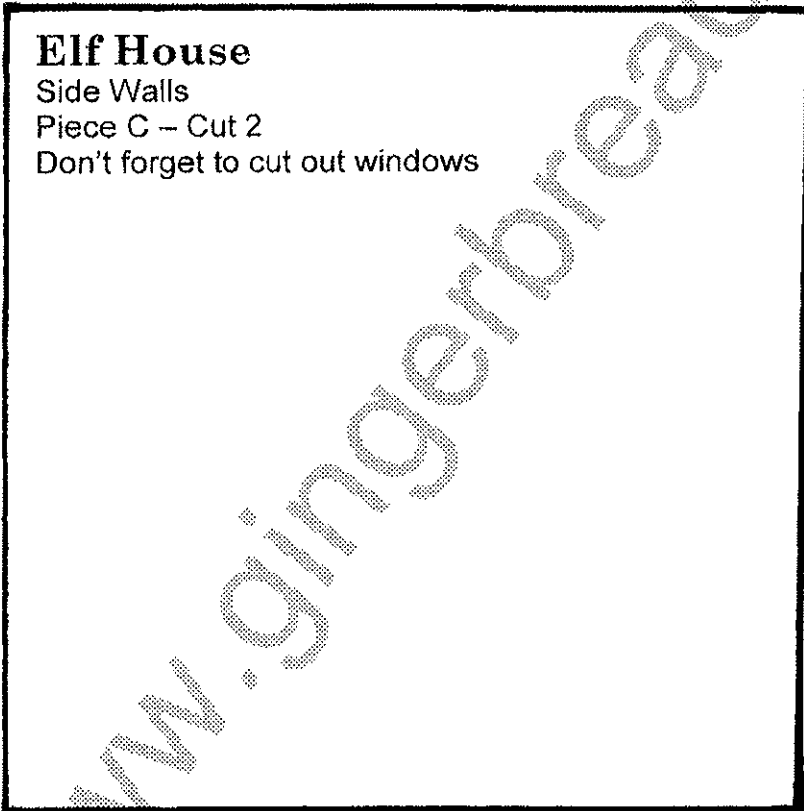
**Elf House**

Chimney Sides  
Piece D – Cut 2

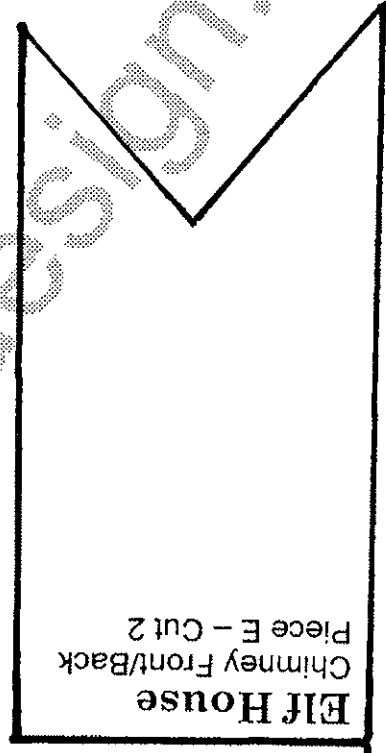


**Elf House**

Side Walls  
Piece C – Cut 2  
Don't forget to cut out windows



**Elf House**  
Chimney Front/Back  
Piece E – Cut 2



**Elf House**  
Roof Sections  
Piece A – Cut 2

